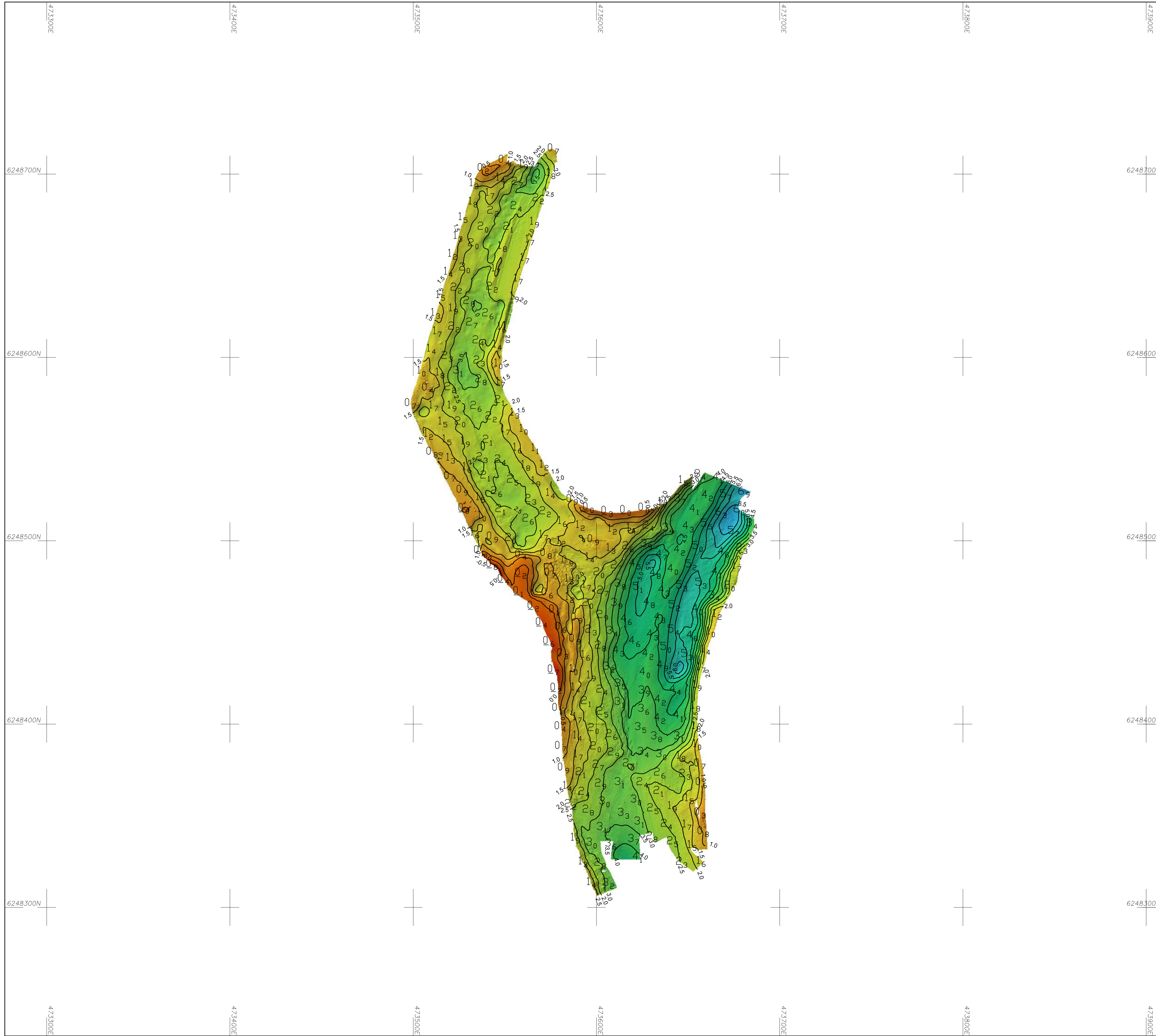


BATHYMETRY



**Legend:**

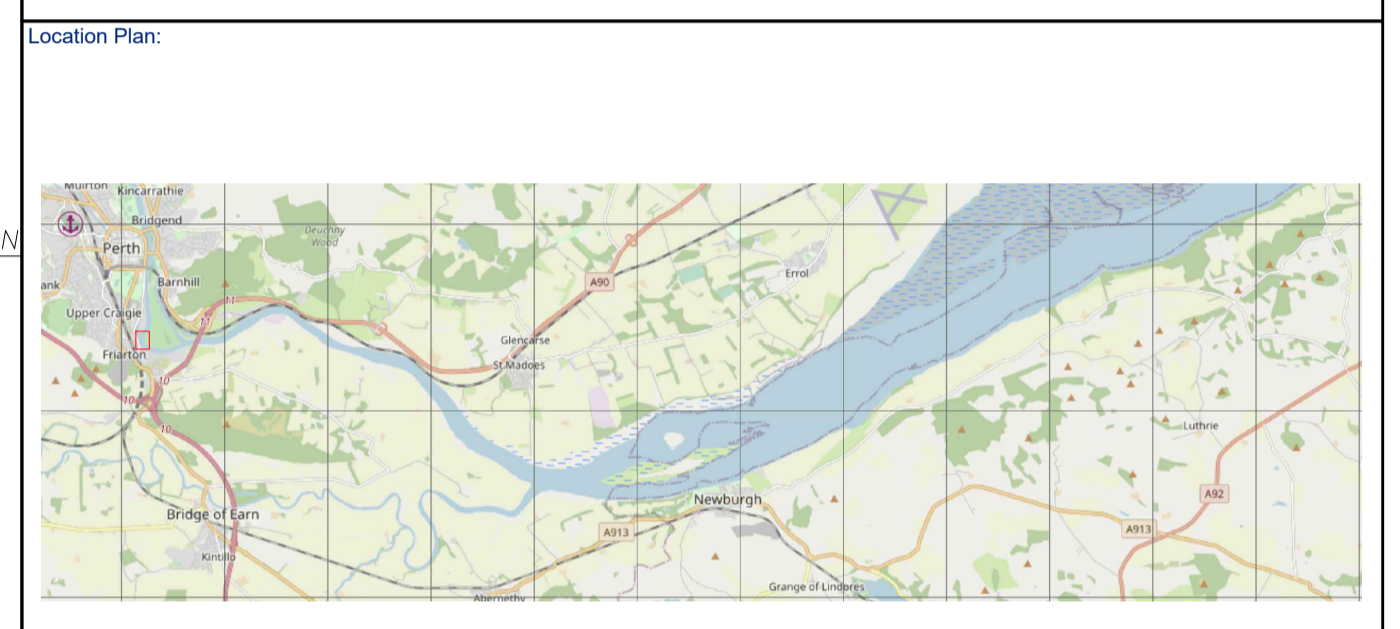
**BATHYMETRY**

— 1.5 — Contours at 0.5m intervals relative Chart Datum  
 4<sub>1</sub> Heights in metres and decimetres relative Chart Datum

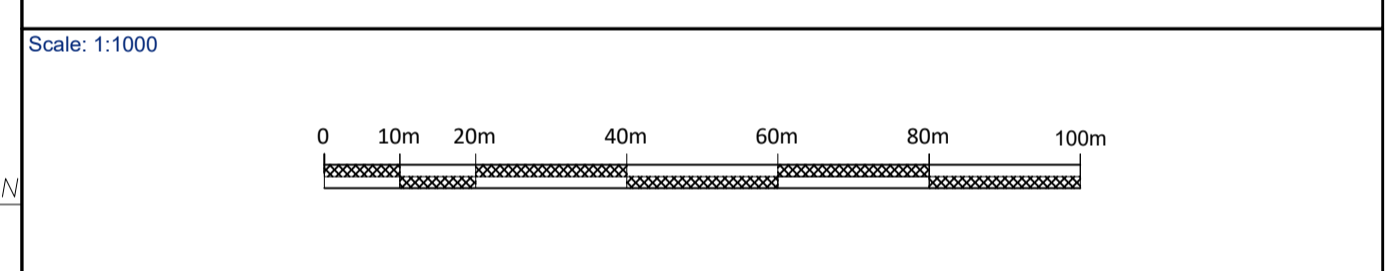
**SHADED RELIEF BATHYMETRY SCALE BAR**

Depth in metres relative to CD

- General Notes:**
- Positioning provided by a Applanix POS MV Oceanmaster using Trimble VRS Now RTK correction service.
  - Co-ordinate System: WGS84 UTM30N
  - Bathymetry data gridded at 0.25m x 0.25m.
  - Seabed shaded relief, sun illumination: Azimuth 315°, Elevation 45°, Exaggeration x2.
  - Bathymetry data provided Teledyne RESON T-20P.
  - Vertical Datum : Chart Datum  
 - Chart Datum is 0.08m Below ODN



Reproduced from the Ordnance Survey Land ranger map by permission of Ordnance Survey on behalf of The Controller of Her Majesty's Stationery Office, © Crown copyright, Survey & Engineering Projects Limited. All rights reserved. Licence Number 100056058



0	MC	06/11/2020	ND	JRS	Draft
Rev.	Drawn	Date	Checked	Approved	Details
Survey Date:		Surveyor:		Drawn By:	
10/09/2020-19/09/2020		JS		MC	

**Client:**

Perth Harbour  
 Friarton Road  
 Perth  
 PH2 8BB  
 T: 01738 624056  
 E: perth.harbour@calmac.co.uk

**Contractor:**

SEP Hydrographic Limited  
 Unit 3D  
 Selby Place  
 Skelmersdale  
 Lancashire  
 WN8 8EF  
 T: 01695 729 835  
 E: info@sephydrographic.com  
 W: www.sephydrographic.com

**Contract:**

PERTH HARBOUR & RIVER TAY  
 SHADED RELIEF BATHYMETRY

**DWG:**

PERTH HARBOUR  
 SHADED RELIEF BATHYMETRY

Original Paper Size:	Scale:	Horiz.:	Chart:	Rev.:
A1	1:1000	Vert.: N/A	01 of 09	0