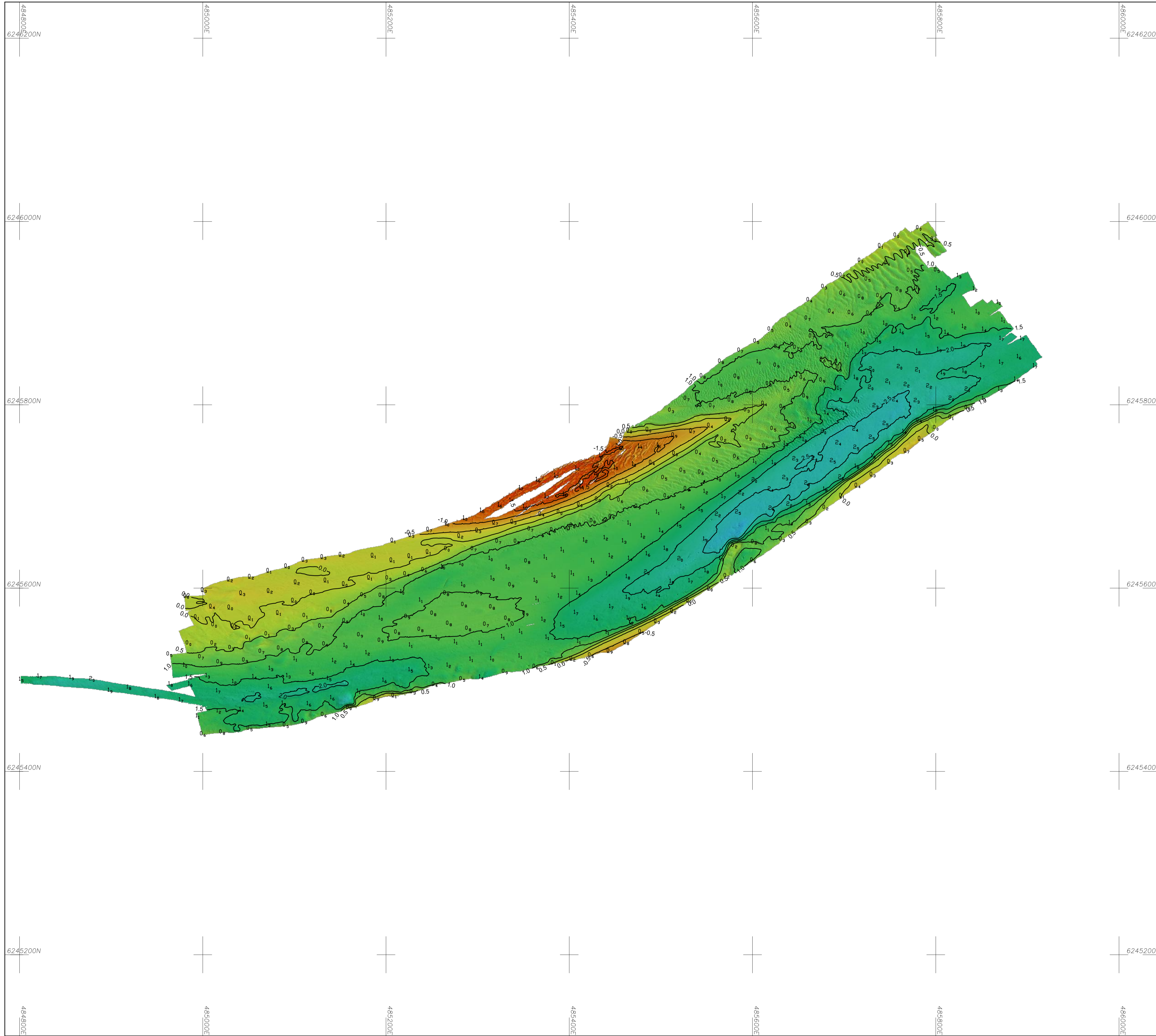


BATHYMETRY



Legend:

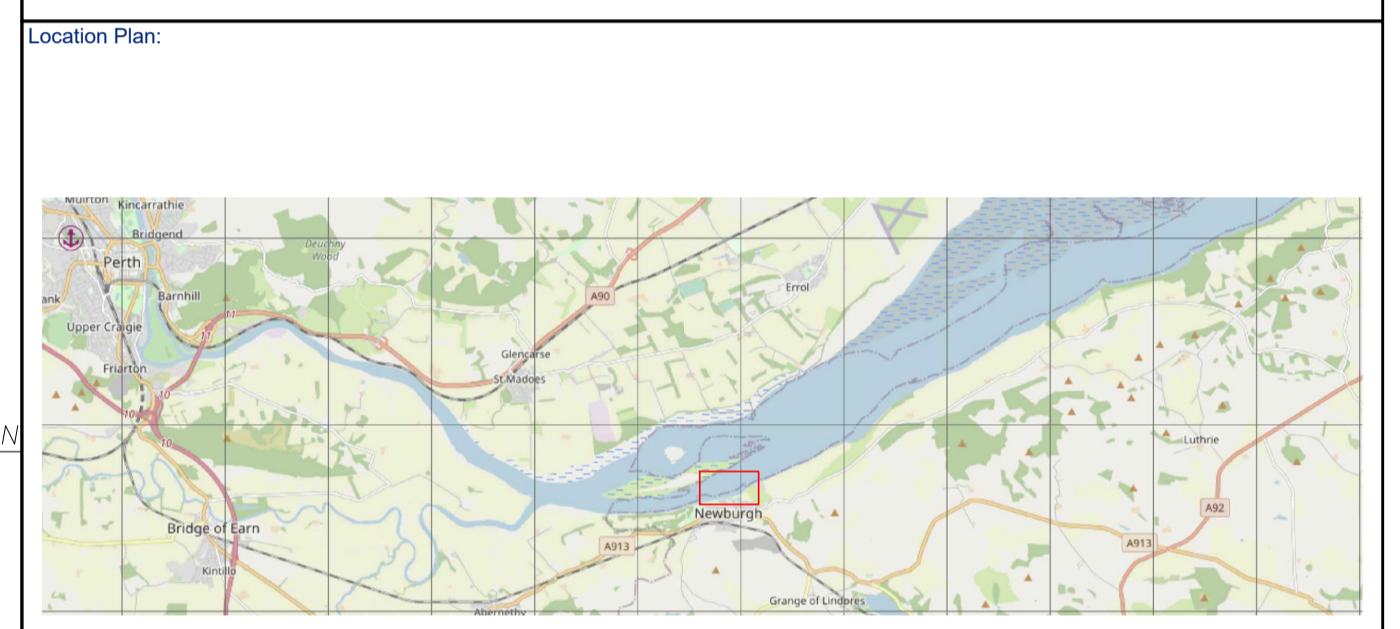
BATHYMETRY

- 1.5 — Contours at 0.5m intervals relative Chart Datum
- 4₁ Heights in metres and decimetres relative Chart Datum

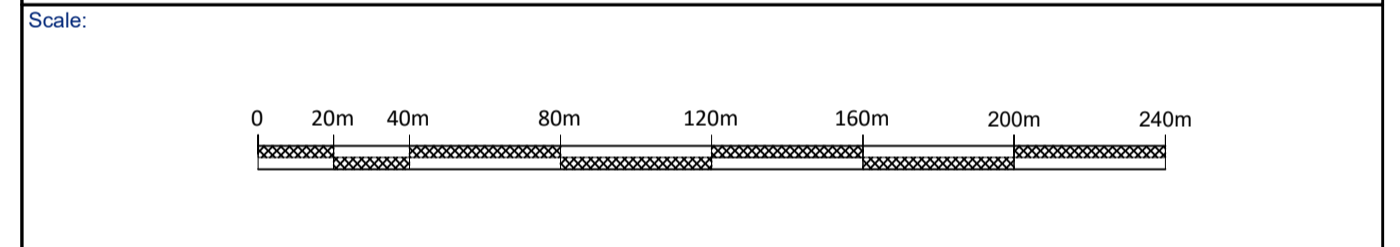
SHADED RELIEF BATHYMETRY SCALE BAR

Depth in metres relative to CD

- General Notes:**
1. Positioning provided by a Applanix POS MV Oceanmaster using Trimble VRS Now RTK correction service.
 2. Co-ordinate System: WGS84 UTM30N
 3. Bathymetry data gridded at 0.5m x 0.5m.
 4. Seabed shaded relief, sun illumination: Azimuth 240°, Elevation 45°, Exaggeration x2.
 5. Bathymetry data provided Teledyne RESON T-20P.
 6. Vertical Datum : Chart Datum
- Chart Datum is 1.27m Below ODN



Reproduced from the Ordnance Survey Land ranger map by permission of Ordnance Survey on behalf of The Controller of Her Majesty's Stationery Office.
© Crown copyright, Survey & Engineering Projects Limited. All rights reserved.
Licence Number 100056058



1	MC	21/12/2020	ND	JRS	Revised draft
0	MC	10/11/2020	ND	JRS	Draft

Rev.	Drawn	Date	Surveyor	Checked	Approved	Details
		10/09/2020-19/09/2020			JS	MC

Client:

Perth Harbour
Friarton Road
Perth
PH2 8BB
T: 01738 624056
E: perth.harbour@calmac.co.uk

Contractor:

SEP Hydrographic Limited
Unit 3D
Selby Place
Skelmersdale
Lancashire
WN8 8EF
T: 01695 729 835
E: info@sephydrographic.com
W: www.sephydrographic.com

Contract:

PERTH HARBOUR & RIVER TAY
SHADED RELIEF BATHYMETRY

DWG:

NEWBURGH
SHADED RELIEF BATHYMETRY

Original Paper Size:	Scale:	Horiz.: 1:2000	Chart:	Rev.:
A1		Vert.: N/A	06 of 09	01